

PLAN 6233

NORTHSTONETM
BUILDERS
*Building Luxury*SM



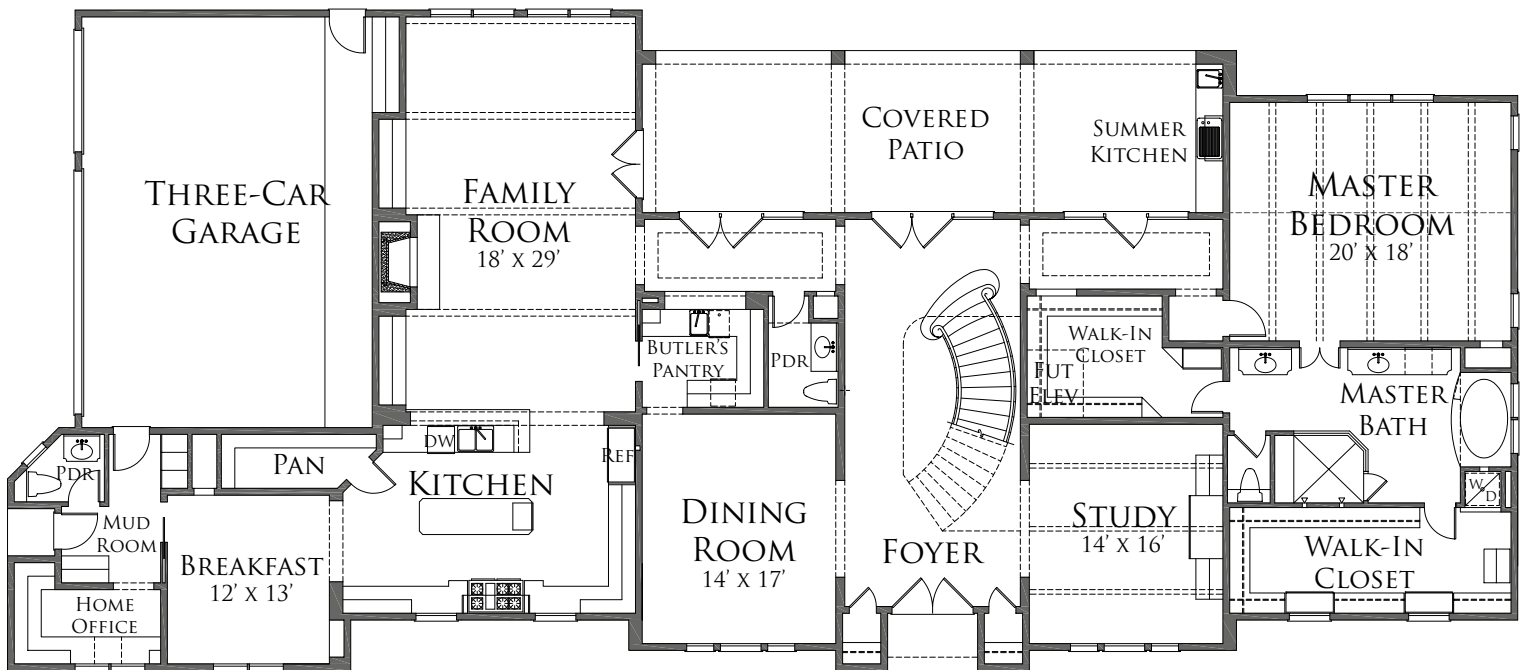
FIVE BEDROOM | FIVE FULL, TWO HALF BATH
6,233 SQUARE FEET
112' X 49'

FOR INFORMATION, CALL 713-973-0700
OR VISIT NORTHSTONEBUILDERS.COM

[CLICK HERE FOR FIRST FLOOR PLAN](#)
[CLICK HERE FOR SECOND FLOOR PLAN](#)

Builder reserves the right to modify floorplans, elevations, and features without notice. Floorplans and exterior renderings are artist's conceptions. Square footage and dimensions are approximate, and may vary by elevation.



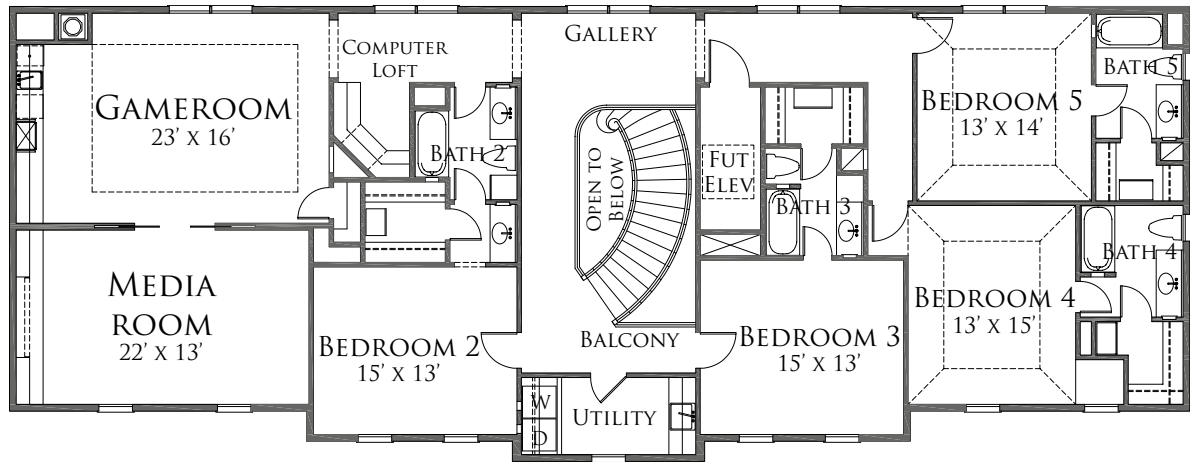


FIRST FLOOR

[CLICK HERE FOR SECOND FLOOR PLAN](#)
[CLICK HERE FOR ELEVATION](#)

Builder reserves the right to modify floorplans, elevations, and features without notice. Floorplans and exterior renderings are artist's conceptions. Square footage and dimensions are approximate, and may vary by elevation.





SECOND FLOOR

[CLICK HERE FOR ELEVATION](#)
[CLICK HERE FOR FIRST FLOOR PLAN](#)

Builder reserves the right to modify floorplans, elevations, and features without notice. Floorplans and exterior renderings are artist's conceptions. Square footage and dimensions are approximate, and may vary by elevation.

