

PLAN 4398

**NORTHSTONE**<sup>TM</sup>  
BUILDERS  
*Building Luxury*<sup>SM</sup>



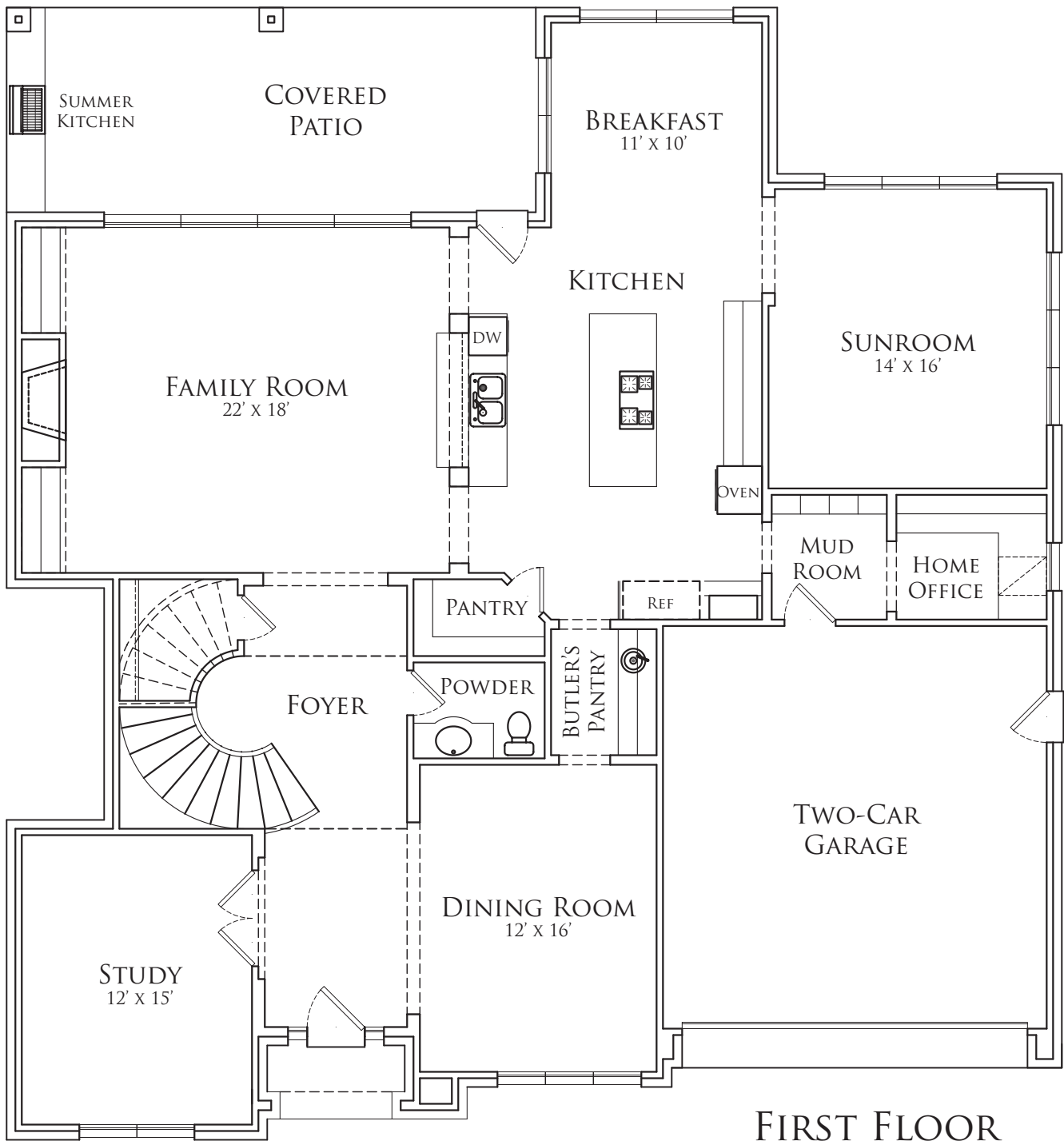
FOUR BEDROOM | THREE AND A HALF BATH  
4,398 SQUARE FEET  
55' X 59'

FOR INFORMATION, CALL 713-973-0700  
OR VISIT [NORTHSTONEBUILDERS.COM](http://NORTHSTONEBUILDERS.COM)

[CLICK HERE FOR FIRST FLOOR PLAN](#)  
[CLICK HERE FOR SECOND FLOOR PLAN](#)

Builder reserves the right to modify floorplans, elevations, and features without notice. Floorplans and exterior renderings are artist's conceptions. Square footage and dimensions are approximate, and may vary by elevation.

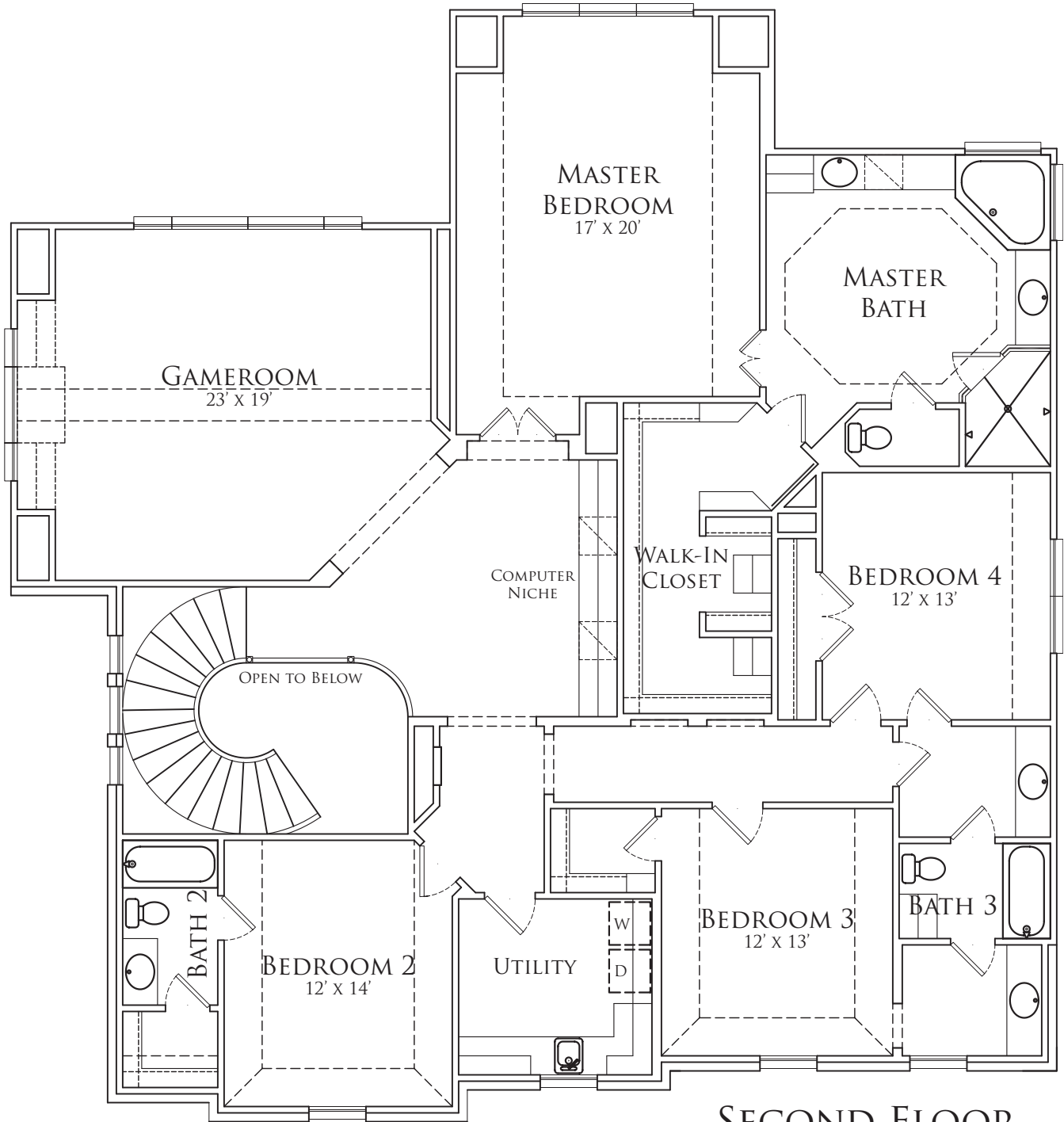




[CLICK HERE FOR SECOND FLOOR PLAN](#)  
[CLICK HERE FOR ELEVATION](#)

Builder reserves the right to modify floorplans, elevations, and features without notice. Floorplans and exterior renderings are artist's conceptions. Square footage and dimensions are approximate, and may vary by elevation.





SECOND FLOOR

[CLICK HERE FOR ELEVATION](#)  
[CLICK HERE FOR FIRST FLOOR PLAN](#)

Builder reserves the right to modify floorplans, elevations, and features without notice. Floorplans and exterior renderings are artist's conceptions. Square footage and dimensions are approximate, and may vary by elevation.

